

The background image shows two women in professional attire standing in a modern office with large windows. They are looking at a tablet together. In the foreground, there are architectural models of buildings and a large-format scanner on a stand. The scanner is a wide, flatbed model with a black frame and a white scanning bed. The office floor is dark and reflective. The overall scene is brightly lit, suggesting a high-tech, professional environment.

# The Professional's Scanner



We didn't invent scanning  
We perfected it!

# The professional's scanner

- In real life it's about getting the job done fast.
- It's about products boosting you to keep your deadlines.
- The system working your way instead of you working the MFP way.

## The ultimate scanning experience

- Productive file scanning with fast validation and file naming.
- Integrate and add value to all your large format printers
- Scalable solutions designed for your needs.



# 3 ways to optimize your operation



Optimized scanning solution with best operational comfort in the market.



Create productive side-by-side solutions with all major printers in the market.

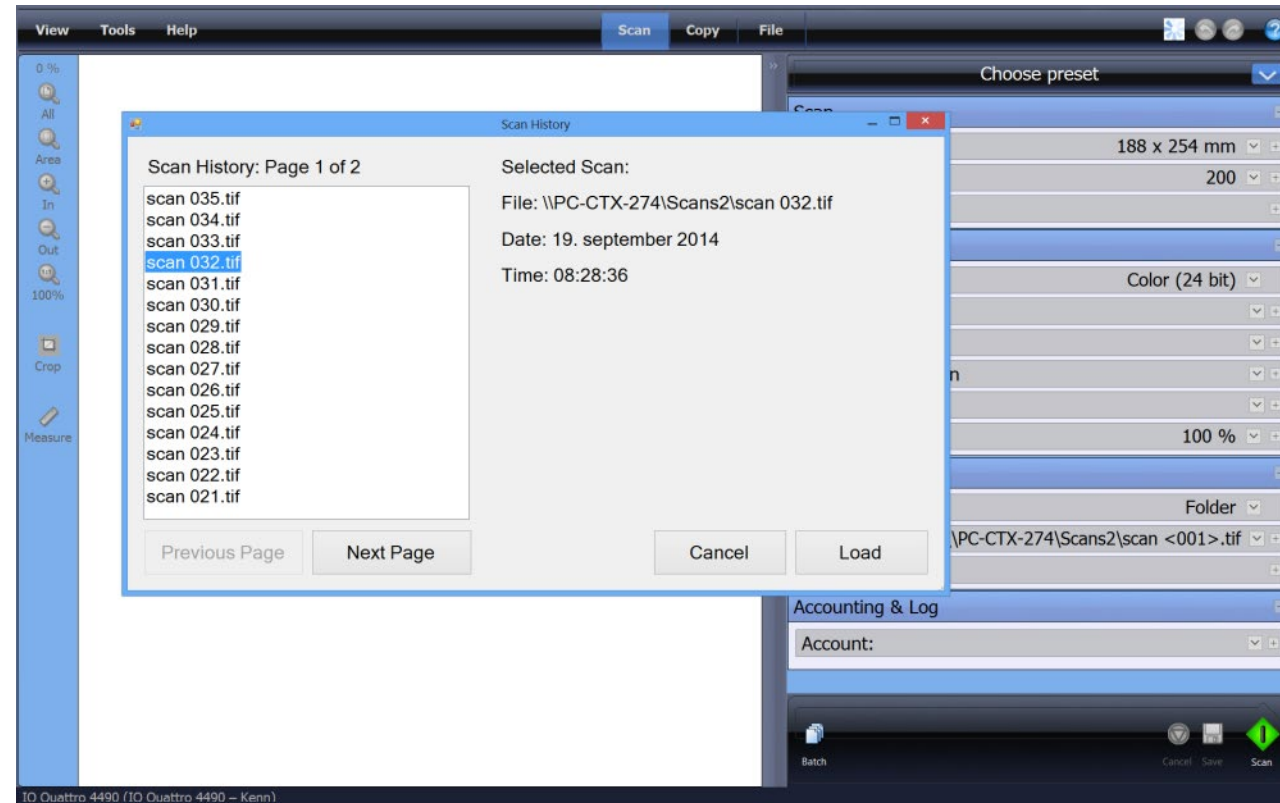


Make the most of your space and place the scanner over your large format printer.



# New version of Nextimage REPRO includes REimage

- No need to retrieve and rescan your original paper documents.
- Virtually go back to your RAW scans and capture specific contents, which you did not choose to include in your first file formats.
- We call it REimage, only available with Contex ScanStations and Nextimage Repro

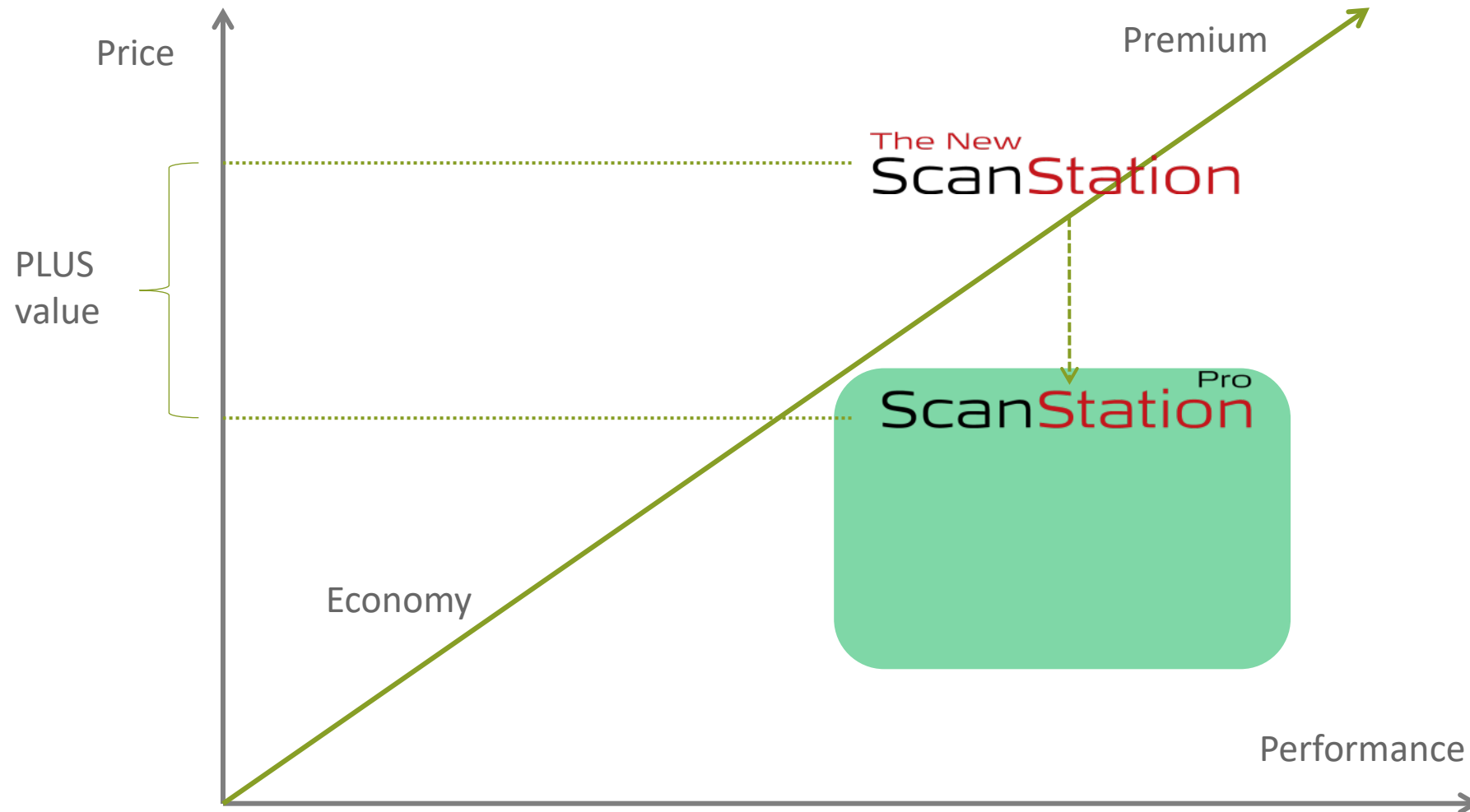


# Price and performance

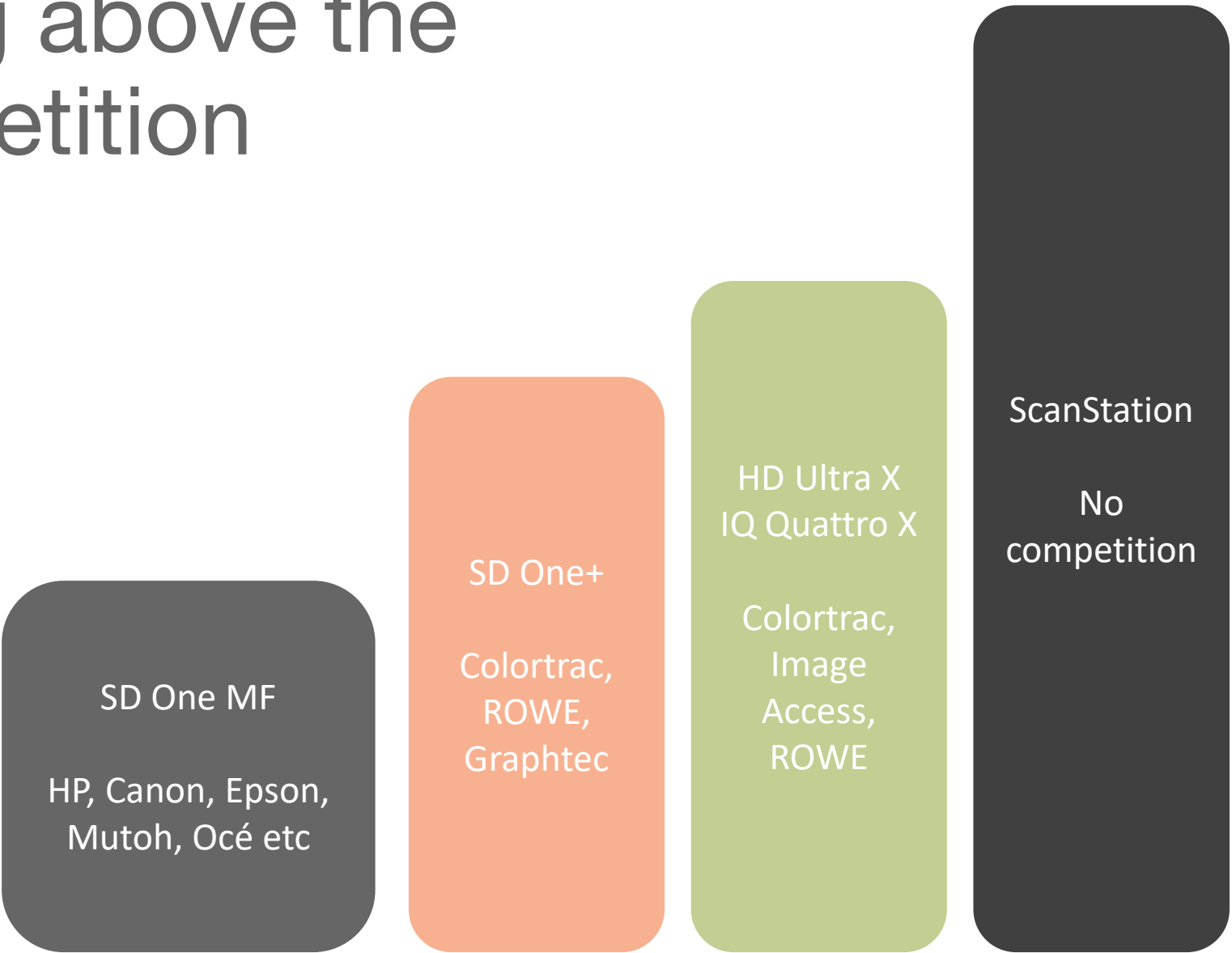




# Price and performance



# Rising above the competition



# No competition

## Unmatched Price Point

- Best value in the industry

## All large format printers supported

- Contex has the widest range of direct supported printers.
- Printer brands only support own printers. Example HP T830, HP HD Pro, HP SD Pro etc

## Multi printer support

- Printer brands only support one printer at a time

## Superior imaging software

- Nextimage is unique to Contex solutions

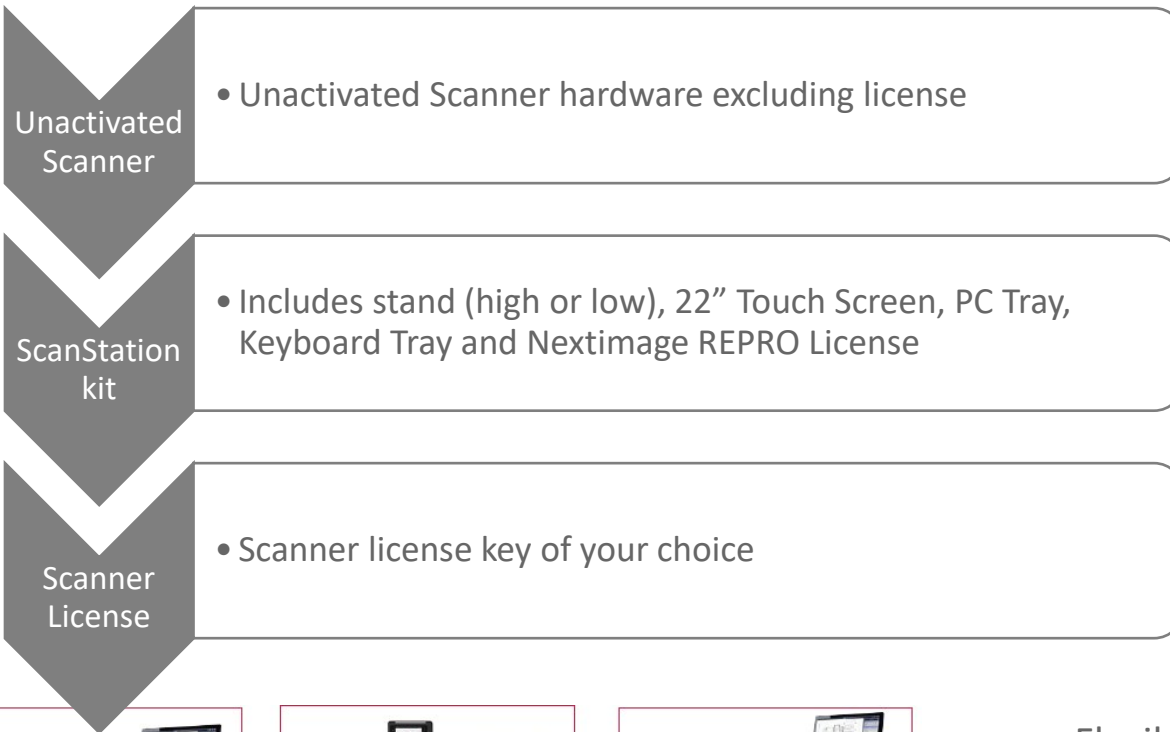
## Unmatched versatility

- Output optimized for each industry

# 6 Solutions

- HD Ultra X 6090 ScanStation PRO
- HD Ultra X 6050 ScanStation PRO
  
- HD Ultra X 4290 ScanStation PRO
- HD Ultra X 4250 ScanStation PRO
  
- IQ Quattro X 4490 ScanStation PRO
- IQ Quattro X 4450 ScanStation PRO

# Build your ScanStation PRO



- Flexible stocking
- Better response to customer demand
- Add the PC of your choice

# Touch Screen Specifications

Feature	Specification
Touch Screen	22 inch capacitive multi touch display
Resolution	Full HD 1080p, 1920 x 1080 (2.1 megapixel)
Display Color	16.7 Million
Aspect Ratio	16:9
Interface and connections	VGA, DVID, DisplayPort. USB for Touch connectivity

Supports pinch and swipe for easy operation.



# What does this mean?

- ScanStation trademark is unique to Contex.
- ScanStation is our solution for true scanning and copying.
- MFP is 2-3 ips – ScanStation 12-18 ips for true productivity.
- Our response to the market change is using the ScanStation as a better customer solution by adding value to the customer's workflow.

# It is great that...

## as a distributor:

- You can provide a complete solution for digital archiving tasks of any kind.
- You get access to a market that is widely funded by governments around the globe.

## as a customer:

- You get the best solution for all your tasks.
- Designed with productivity and ease of use in mind.
- Low cost of ownership combined with outstanding accuracy and uptime makes the the best investment you will ever make.



# The pitch

- ScanStationPro will improve your productivity by 30%.
- ScanStationPro solutions contain everything you need and have the best ROI in the market.
- Use ScanStationPro to secure legacy information and protect it from flooding, fire or other environment damage.



# Feedback & Questions?