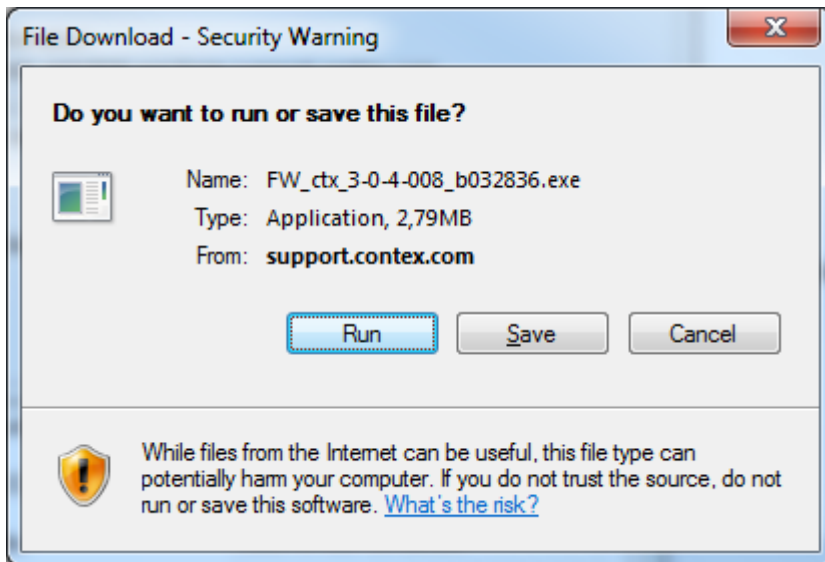


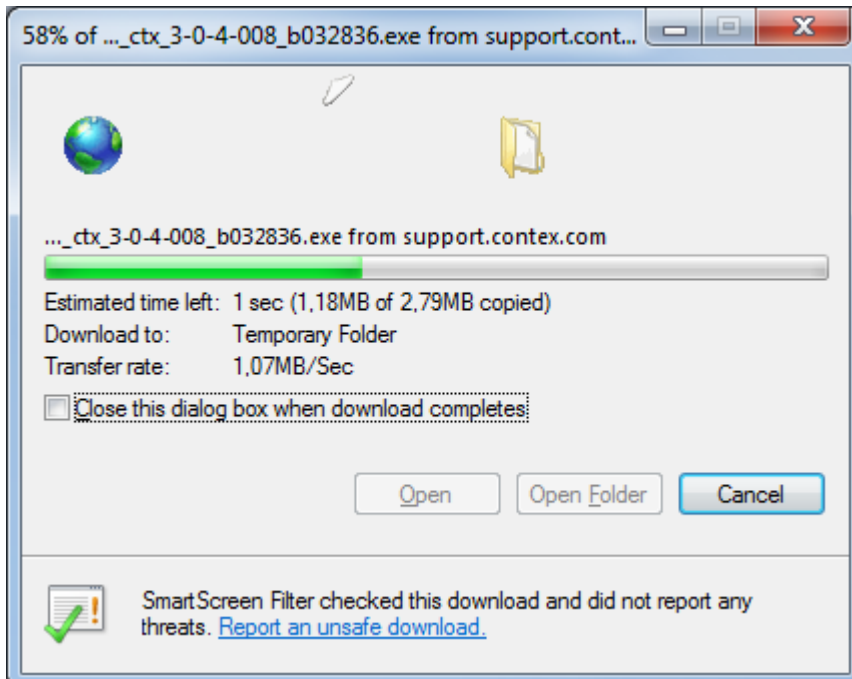
## Firmware Installation Instructions.

Installation of firmware requires scanner to be connected through, USB, Firewire or SCSI. It is not supported to install firmware through network connection.

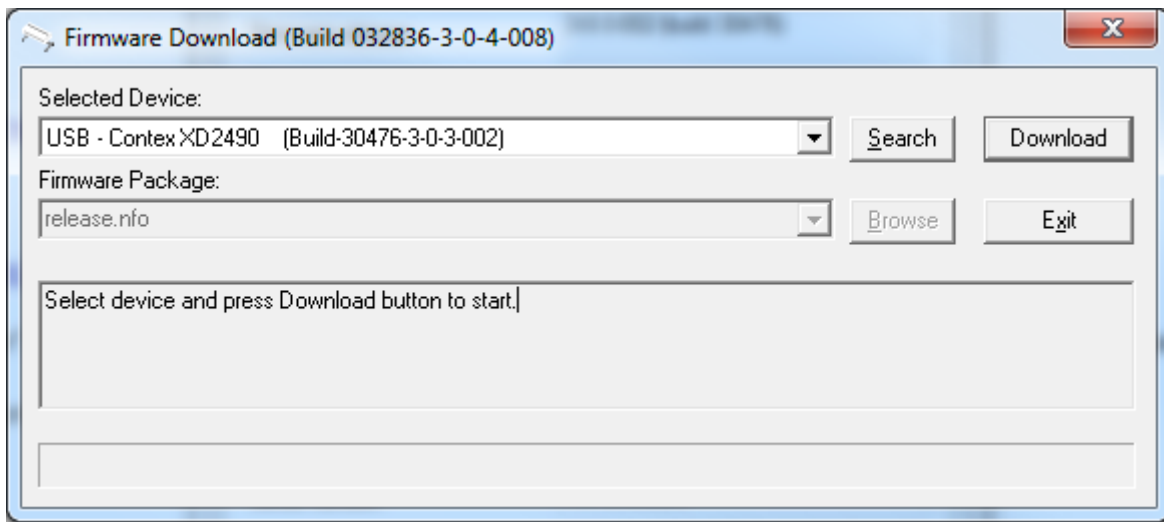
Click on the link to download the file. Select "Run" to start the installation.



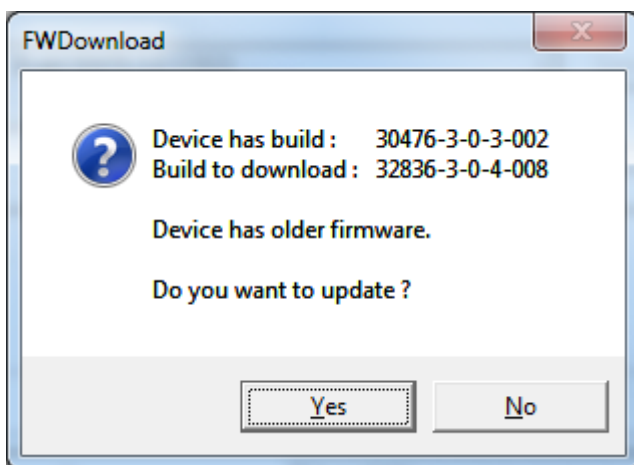
Wait for file to download.



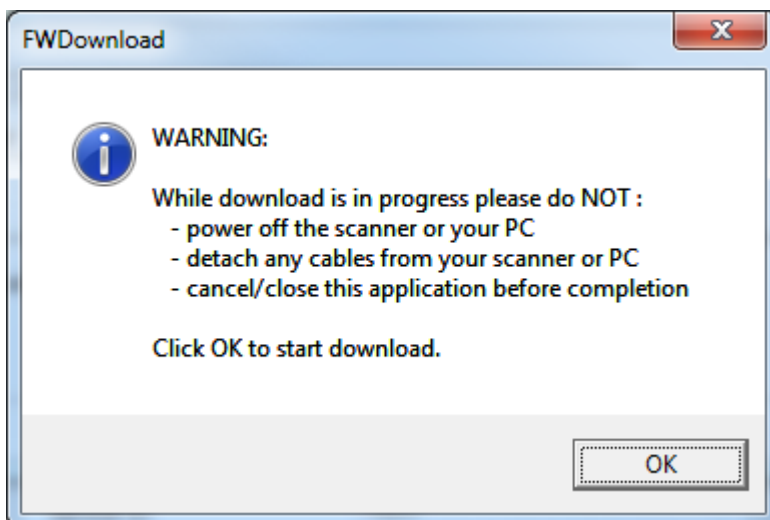
Click on "Download" to start the installation.



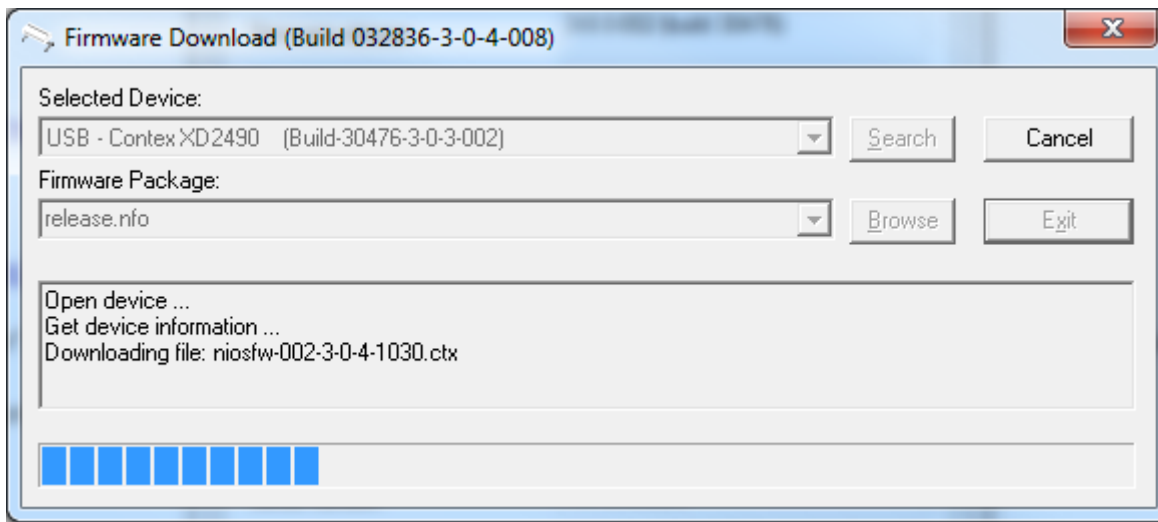
Installation program will confirm that upgrade is required. Click "Yes" to continue.



Do not turn power off while installing firmware. Click "OK" to start installation.



Please wait while the firmware is downloaded.



Confirmation that installation is complete. Note that firmware version in scanner has changed. Click "Exit".

