

Firmware Installation Instructions for SD3600 Series.

Installation of firmware requires scanner to be connected through USB.

Click on the link "Firmware Installer" to download the file. Select "Run" to start the installation.

The screenshot shows a web page titled "User Guide and Software Downloads" with three sections:

- Scanner User's Guide:** Includes a PDF icon, "Scanner User's Guide" link, "Size 2.5 Mb", and "Released November 2011".
- Driver Download (WIDEsystem):** Includes a USB icon, "WIDEsystem Installer" link (highlighted with a red arrow), "Version 4.2 Build 48012", "Released September 2012", "Release Notes" link, and "Installation Instructions" link.
- Firmware release 3.0.7 - 008 (SD3600 Only):** Includes a gear icon, "Firmware Installer" link, "Version 3.0.7 - 008 Build 47290", "Released August 2012", and "Installation Instructions" link.

At the bottom, a Windows security warning dialog is displayed: "Do you want to run or save FW_ctx_3-0-7-008_b047290.exe (2,07 MB) from downloads.context.com?". The "Run" button is highlighted with a red box.

Click on "Next >" to start the Scanner Firmware Wizard.

The screenshot shows the "Scanner Firmware Wizard (Build 47290-3-0-7-008)" window. The title bar includes a close button (X). The main content area features a blue sidebar with a scanner icon and a white background with the following text:

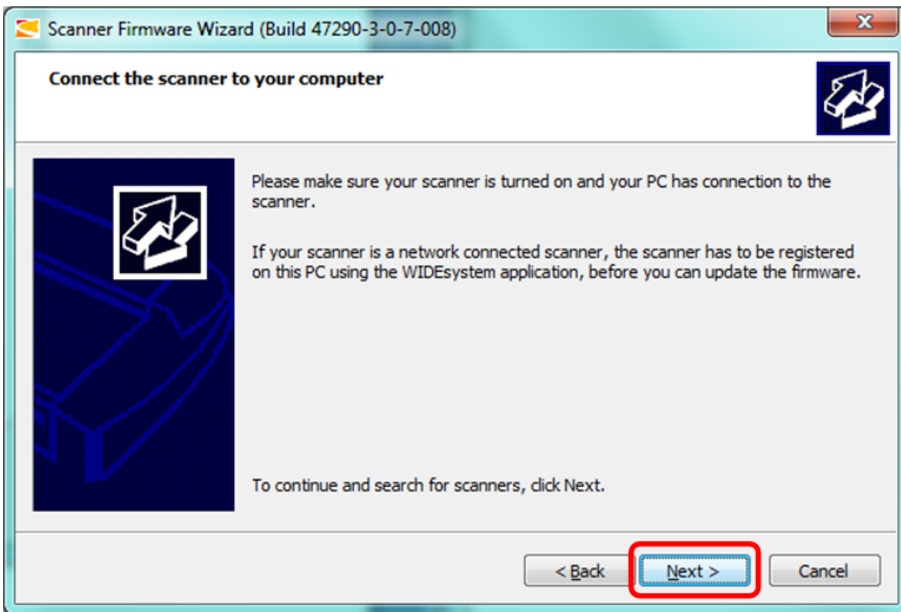
Welcome to the Scanner Firmware Wizard

This wizard will help you to update firmware in your scanner.

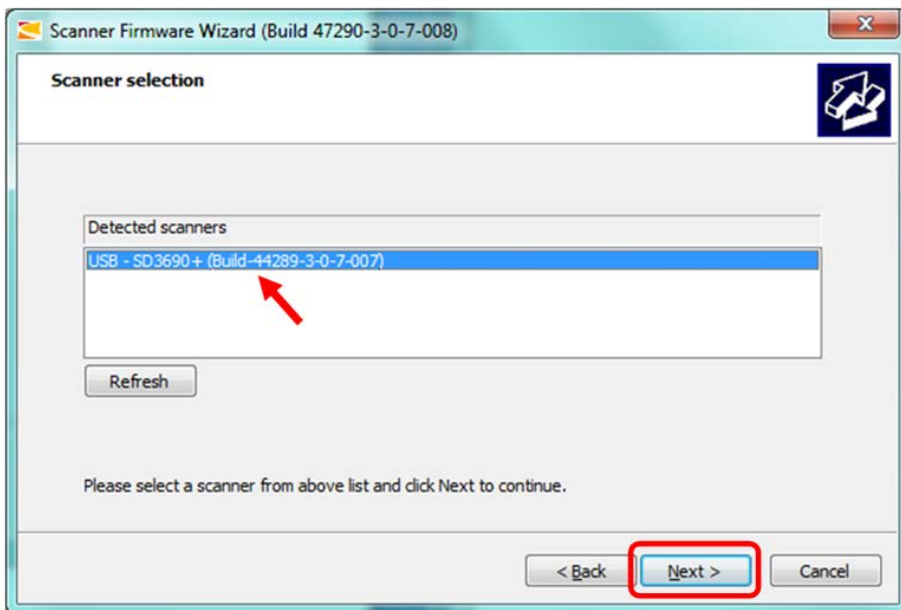
To continue, click Next.

At the bottom, there are three buttons: "< Back", "Next >" (highlighted with a red box), and "Cancel".

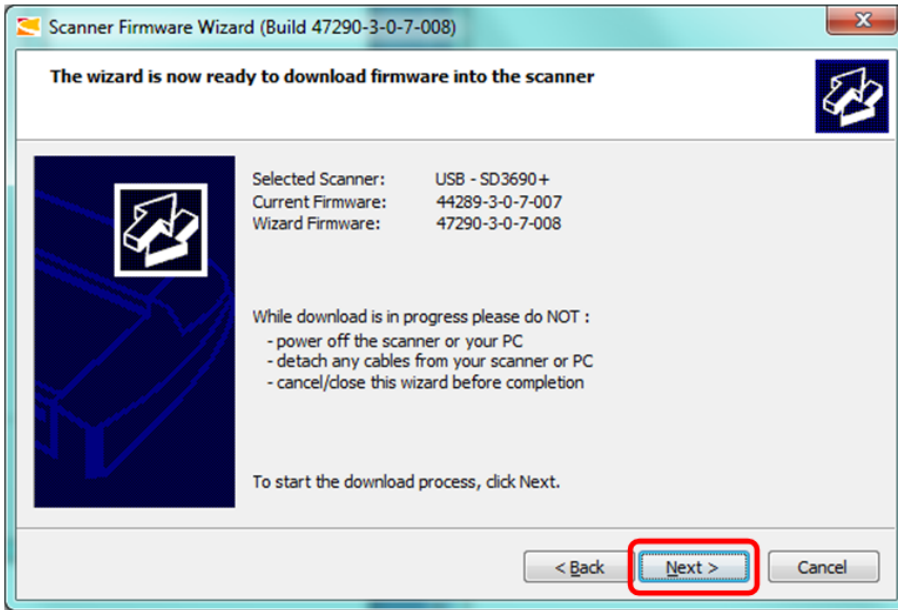
Click on "Next >" to search for scanners.



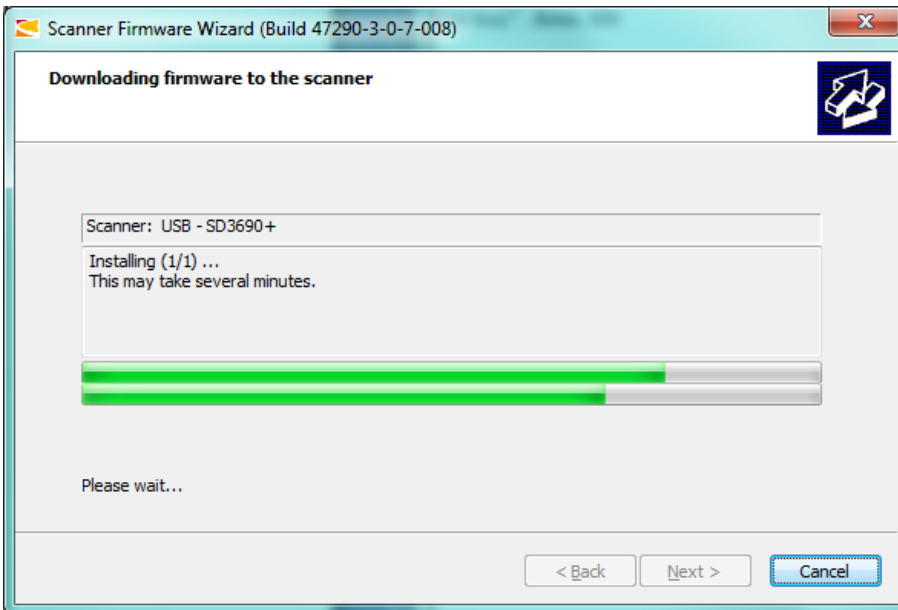
Select scanner to update and click "Next >".



Click on "Next >" to start update of the scanner.



Please wait while the firmware is installed.



Firmware download is completed. Note that firmware version in scanner has changed.

Click "Finish" to exit.

