

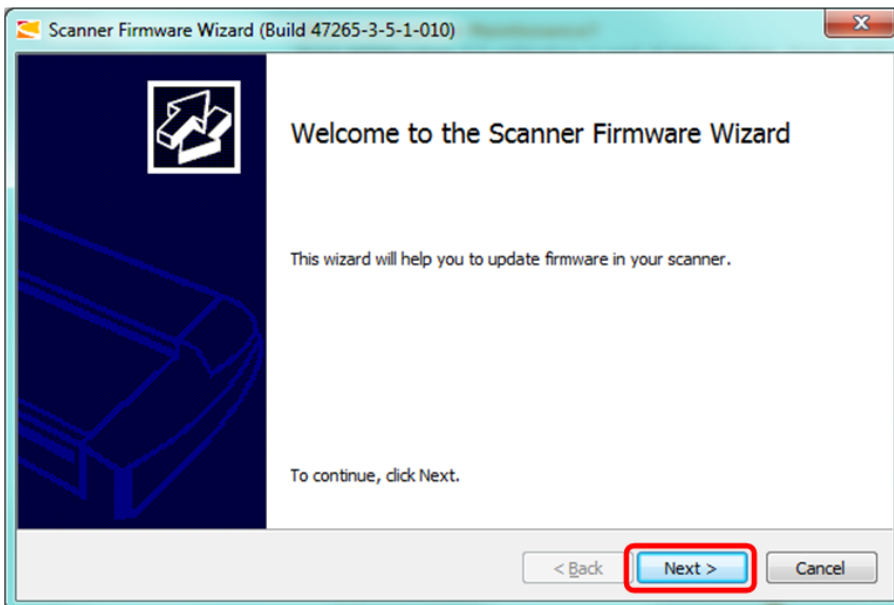
Firmware Installation Instructions for HD Ultra Series.

Installation of firmware requires scanner to be connected through USB or Gigabit Ethernet.

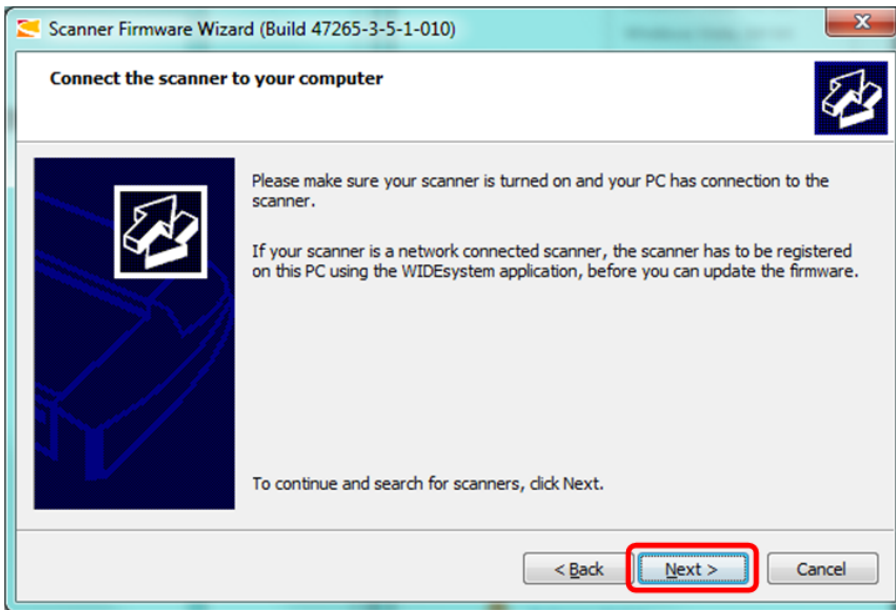
Click on the link "Firmware Installation Program" to download the file. Select "Run" to start the installation.



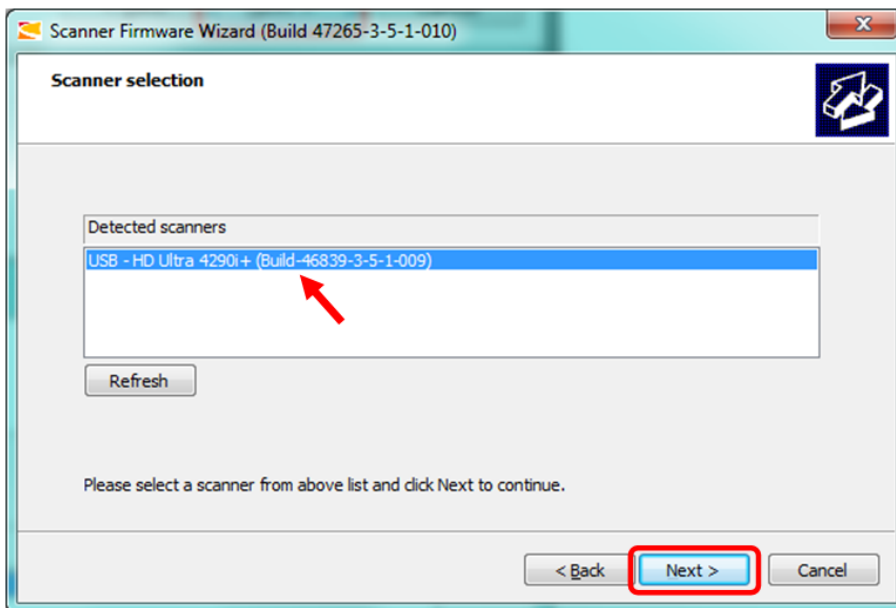
Click on "Next >" to start the Scanner Firmware Wizard.



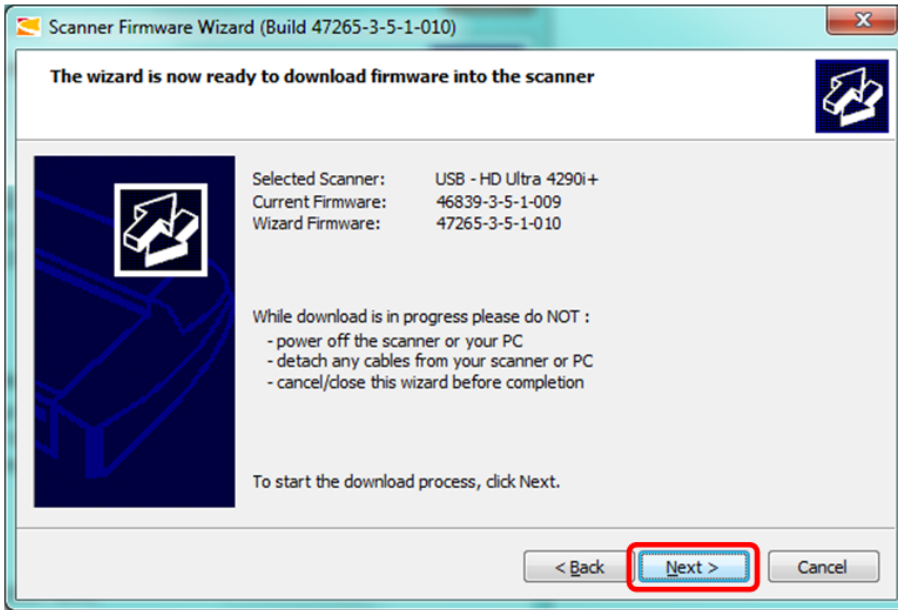
Click on "Next >" to search for scanners.



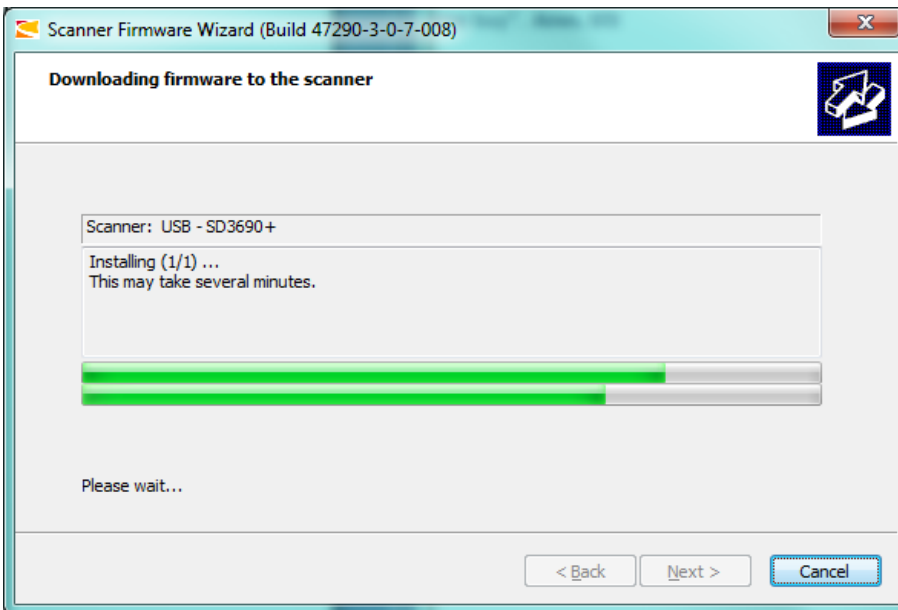
Select scanner to update and click "Next >".



Click on "Next >" to start update of the scanner.



Please wait while the firmware is installed.



Firmware download is completed. Note that firmware version in scanner has changed.

Click "Finish" to exit.

