

Firmware Installation Instructions for IQ 2400 and IQ 4400 Series.

Installation of firmware requires scanner to be connected through USB or Gigabit Ethernet.

Click on the link "Firmware Installation Program" to download the file. Select "Run" to start the installation.

The screenshot shows a web page titled "User Guide and Software Downloads" with three sections:

- Scanner User's Guide**: Includes a PDF icon, "Scanner User's Guide", "Size 4.3 Mb", and "Released September 2012".
- Driver Download (WIDEsystem)**: Includes a USB icon, "WIDEsystem Installer" (highlighted with a red arrow), "Version 4.2 Build 48012", "Released September 2012", "Release Notes", and "Installation Instructions".
- Firmware release 3.2.1.3 - 003 (IQ Series Only)**: Includes a gear icon, "Firmware Installer", "Version 3.2.1.3 - 003 Build 48188", "Released September 2012", "Release Notes", and "Installation Instructions".

At the bottom, a Windows security warning dialog box is displayed: "Do you want to run or save FW_ctx_3-2-1-3-003_b048188.exe (2,29 MB) from downloads.context.com?". The "Run" button is highlighted with a red rectangle.

Click on "Next >" to start the Scanner Firmware Wizard.

The screenshot shows the "Scanner Firmware Wizard (Build 48188-3-2-1-3-003)" window. It features a blue sidebar with a scanner icon and a main white area with the following text:

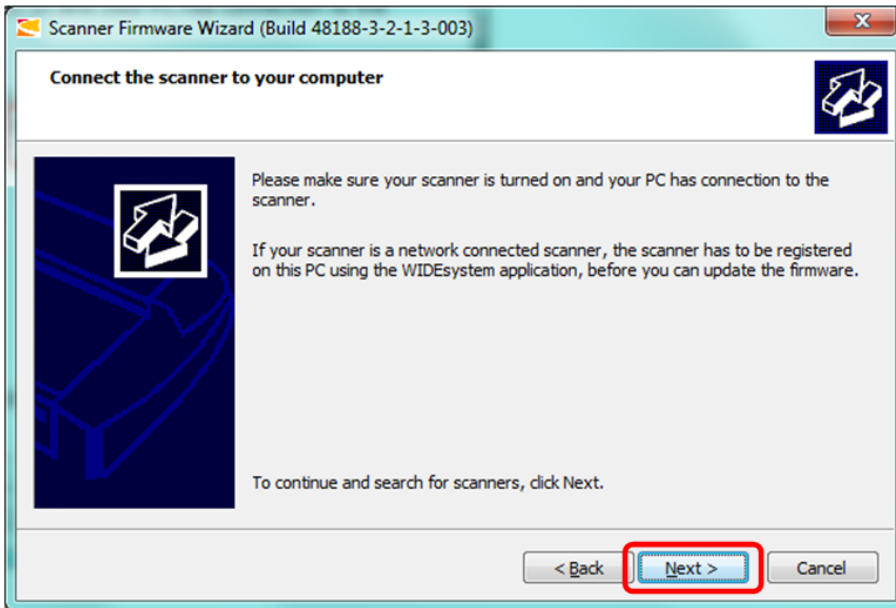
Welcome to the Scanner Firmware Wizard

This wizard will help you to update firmware in your scanner.

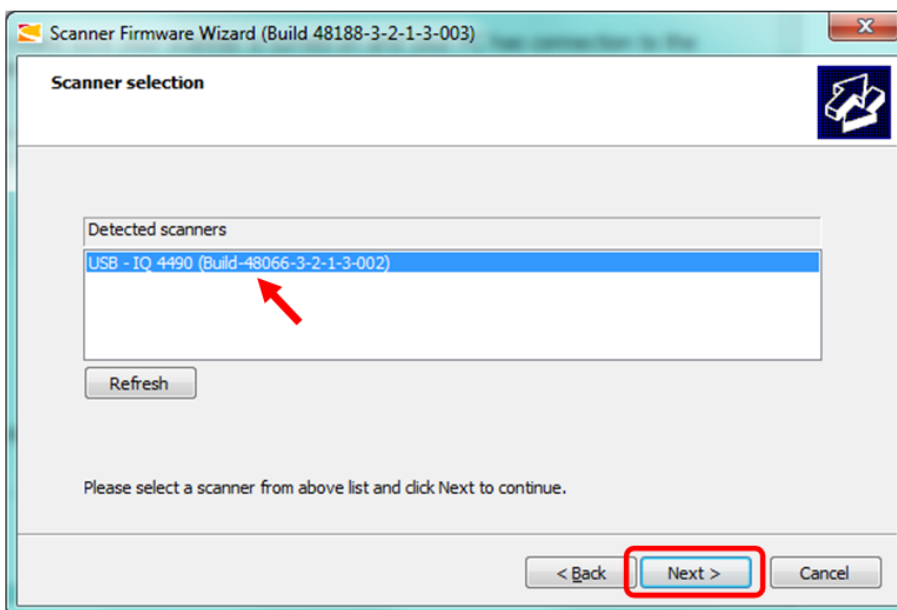
To continue, click Next.

At the bottom, there are three buttons: "< Back", "Next >" (highlighted with a red rectangle), and "Cancel".

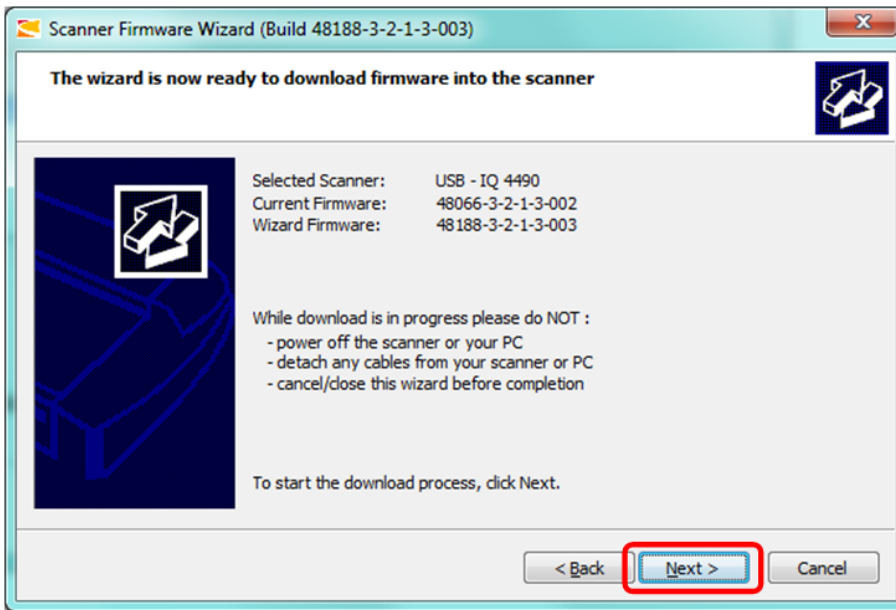
Click on "Next >" to search for scanners.



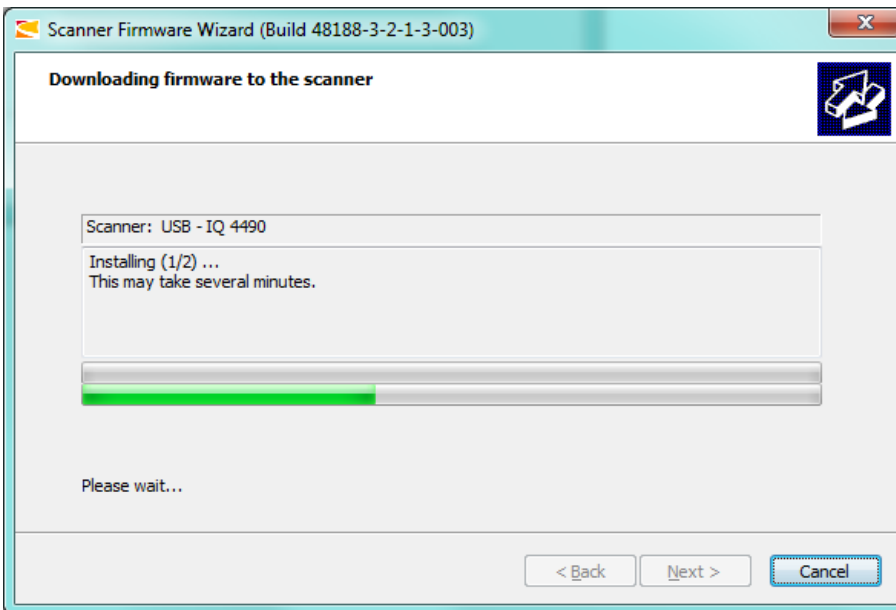
Select scanner to update and click "Next >".



Click on "Next >" to start update of the scanner.



Please wait while the firmware is installed.



Firmware download is completed. Note that firmware version in scanner has changed.

Click "Finish" to exit.

