



Designed to work the way the world works



Your time better spent



Contex SD One MF

MFP

Designed to work the way you work

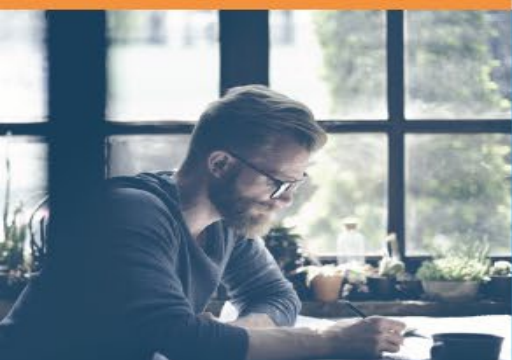


Better perfect than just "done"

Changing the future of large format MFP



The right tools to let you bring out your best



You don't win by copying - you win by adding value



MFP made smarter



The MFP Market

The MFP segment is today covered mainly by MFPs from the major brands.

These solutions are used in 2 ways:

- Mark-up and scan changes and notes.
- Create copies as needed.

Solutions from 3rd parties are typically complex and require an external PC or panel PC to operate.

Today's MFP Solutions

- Embedded solutions are limited in functionality and printer support.
- Non-embedded solutions are complex to setup and use.
- No MFP from a major brand supports other brands printer



SD One MF





**It's not just how it works with
my printer It's how it works for
me**



Contex SD One MF

Intelligently Integrate

Personalize your scanner

- Centered around you, not your scanner. Individual user profiles allow easy use by the entire team. Set up once, remember forever.

Scan direct to project folders

- SD One MF remembers your preferences and scans direct to your saved project folder or mobile platforms through integrated Cloud support. One click scanning is now at your fingertips.

WiFi Enabled

- The only WiFi enabled wide format scanner. WiFi compatibility makes SD One MF easy to both set up and use

Secure scanning

- Protect your data. Log in with your PIN each time you scan.



**It's not just about copying
It's about adding value**



Contex SD One MF

Intelligently Versatile

Maintenance

- 90% of construction is re-work. Use SD One MF to capture every change.

As-builts

- The built-in computer with a touch panel controller on the top of the scanner lets you mark-up, share and collaborate without ever having to print your scanned files. Your login and personal user profile allows you to communicate directly to your email, folders – and cloud service.

Design

- However you work, SD One MF is an integral part of the design process. Start with a hand drawn document then digitize. Be inspired by old documents and use SD One MF to bring them back to life.

Printing is just another app

- Don't be constrained to just one printer, or to just copying your scans. Direct printer drivers are included with SD One MF, giving you complete integration with your preferred printer.



**It's not just about sharing.
It's about a shared
understanding**



Contex SD One MF

Collaborate Intelligently

Share

- Collaborate to unlock your project's potential. SD One MF shares your documents, so you can share your ideas and knowledge.

As-builts

- SD One MF makes it easy to mark-up and annotate your scans to copy or share

Cloud Connected

- Integrated Cloud support supports collaboration with clients and partners, as well as internal colleagues.

Printing is just another app

- Securely scan and share in one step. Available from iTunes, rainforest365 takes personalization, collaboration and ease of use to the next level by making scanning from your wide format scanner simple. With rainforest365 you can view your scans on your iPhone or iPad then email or save to your preferred Cloud destination.



**It's not just about close
integration. It's about working
your way**



Contex SD One MF

Work Intelligently

Choose your printer

- Compatible with all major printer brands, SD One MF gives you complete flexibility to use the right printer for you. No limits.

Fully Integrated

- SD One MF is a powerful standalone scanner that is also as tightly integrated with your printer as an all in one machine. All the benefits. None of the drawbacks.

Printer Drivers included

- HP, Canon and Epson native printer drivers are included as standard.

Stand Options

- SD One MF can be positioned to support your needs. Place it beside the printer on a low stand for full accessibility; position on a high stand or sitting directly on the printer to save space. Your choice.



**It's not just about getting it
done.
It's about trust**

Technology leadership you can trust

Contex SD One MF

Delivers intelligence to MFP

Bring multi-function to your existing printer with this new scanning communications device. With SD One MF, you get more: more details, more features, more possibilities and more quality. You get all the Contex knowledge and experience compressed into one easily operated device. The SD MF large format scanner comes equipped with a touchscreen the size of a tablet PC, so you can scan, annotate, mark-up, file, and share your scans on one single device. SD One MF doesn't just give you scans, it gives you possibilities.

WiFi enabled

WiFi enabled and designed to recognize each and every individual user, you can now share scans directly to your designated network folders or your personal Cloud. SD One MF simplifies internal and external collaboration.

Cost recovery

Print management software and hardware are embedded within SD One MF, allowing you to track the cost of every scan, copy and print.

Technology leadership you can trust

Contex is the world's leading manufacturer of large format scanners. Based in Denmark, famed all over the world for great design and innovative thinking, we focus on innovative scanning and software solutions to improve your workflow. Our products have achieved the highest possible recognition, and our presence in more than 90 countries is a testament to our outstanding quality. Read more on contex.com.



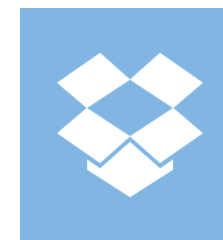
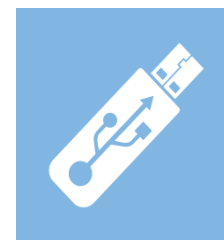
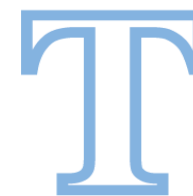
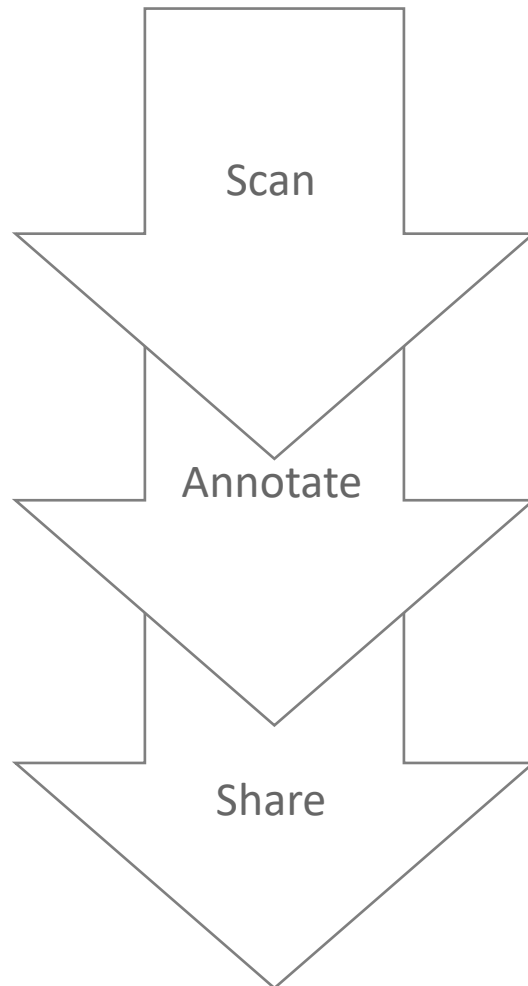
Contex SD One MF
Integrated with you

Mark-up and annotate

- No need to use costly ink and paper.
- Mark-up and annotate directly on the screen and share digital copies.



Mark-up and annotate without printing



A new Multifunction Scanner

- Intuitive touch screen interface
- Support all major brand printers
- Mark-up and annotate directly on the screen
- Share across company network with LINK app.
- Share using integrated Cloud support



New ways to operate



Create copies with HP, Canon or EPSON



Scan to USB 3.0 directly on the scanner.



Scan to local PCs using an intuitive client app.



Share with any major Cloud sharing tool.



Scan to Email using integrated email tool.

New intuitive user interface

- The High-Resolution Multi-Touch Screen supports swipe and pinch to make every operation as intuitive as your smartphone.



Contex LINK

- Connect all your users with the scanner instantly with Contex LINK.
- Install the client app directly from the SD One MF and it automatically creates a profile for the user on the scanner.
- The users can then swipe on the screen to select their profile and scan to their local PC or preferred Cloud platform.



3 ways to combine with your printer

- High stand above your large format printer
- Low stand as side-by-side next to your printer
- Placed on any flat, solid surface



HP, Canon and EPSON

Integrated





Two stand options



Same stand as SD One+





Integrated Cost Recovery

- Universities, Facilities Management, Large firms.
- Connect your preferred cost recovery solution.
- User will be asked for a PIN before scanning and copying.
- All scans and copies will be tracked.

Connectivity

- Scan to USB 3.0 right on the scanner.
- Connect to Network Printers and LINK using WiFi or Gb Ethernet
- USB connections for Cost Recovery.



Key Specifications

Feature	Specification
Models	3 models: 24" / 36" / 44"
Scan Technology	Contex CleanScan CIS with dual sided light
Scan width / document width	24" model: 24 inch (610 mm) / 26.6 inch (675 mm) 36" model: 36 inch (914 mm) / 40 inch (1014 mm) 44" model: 44 inch (1118 mm) / 42.2 inch (1067 mm)
Min scan length	8 inch (203 mm)
Max scan length	50 inch (1270 mm)
Paper path	Front entry, rear exit with return guides.
Accuracy	0.1% +/- 1 pixel
Resolution	150, 300 and 600 dpi only
Speed: Color and Grayscale	150 dpi 3.8 ips 300 dpi 1.9 ips 600 dpi 1.0 ips
File formats	PDF, PDF/A, TIF and JPG

Activation



Turn any printer into a copier



MFP **Repro**

More power in every copy



- IQ Quattro X MFP Repro combines all the best in one, powerful MFP solution.
- Market leading IQ Quattro X scanner
- Full featured award winning Nextimage Repro software included
- All scanning and copying features
- Support unlimited printers including all windows printers.
- Available in 36" and 44"

PC, keyboard and printer are not included

Fit all leading printer brands

- HP DesignJet series
- Canon IPF and other series
- EPSON Stylus Pro and SC-T series (some as side-by-side)
- Océ Colorwave, Plotwave, others (side-by-side)
- Kyocera, Mutoh, Ricoh, Xerox, Etc



Convenience

- For your convenience, Contex MFP Repro offers the choice of operating the touch screen from the left or right side
- In sync: MFP Repro is designed to follow the printer's speed.

Scan



Print



MFP Solutions



SD One MF 24	SD One MF 36	SD One MF 44	IQ Quattro X 36 MFP Repro	IQ Quattro X 44 MFP Repro
24" scanner	36" scanner	44" scanner	36" scanner	44" scanner
Up to 3.8 ips	Up to 3.8 ips	Up to 3.8 ips	4.4 ips color scanner	4.4 ips color scanner
600 dpi	600 dpi	600 dpi	1200 dpi	1200 dpi
Built in controller	Built in controller	Built in controller	Nextimage Repro	Nextimage Repro
High or low stand options	High or low stand options	High or low stand options	High or low stand options	High or low stand options

Feedback & Questions?

MFP Repro