



More than just great value

New feeling



New feeling



Fully featured and compact version of the SD 3600

More than just great value

- SD One+ packs a huge amount of value into its lightweight 24" or 36" size. Easy to use, with fully featured software, plus a control panel directly on the scanner. SD One+ can do everything the SD 3600 can do – and more.

Copy, share and collaborate

- With unmatched ease of use and the highest possible accuracy, you can trust SD One+ on even the most complex projects.

Save time and money

- Must have office scanner at a very attractive price. Scan your oversized maps, engineering and construction drawings in-house with SD One+ to save space, time and money.

Capture all your document types

- Scan and document all your architectural, engineering and construction plans in standard file formats directly into your project folders.

Improvements from SD One

Based on your feedback we have improved the SD One in 3 key ways.

Better look and feel

- New sturdier design and new colors makes the scanner look and feel right.

Higher accuracy

- 0.1% (+/- 1 pixel) accuracy

Improved usability

- Keypad on the scanner including power, document load and scan LEDs

Fully featured and compact

- With new stands



All new stands

- Dedicated stands for 24" and 36" models
- Including document basket

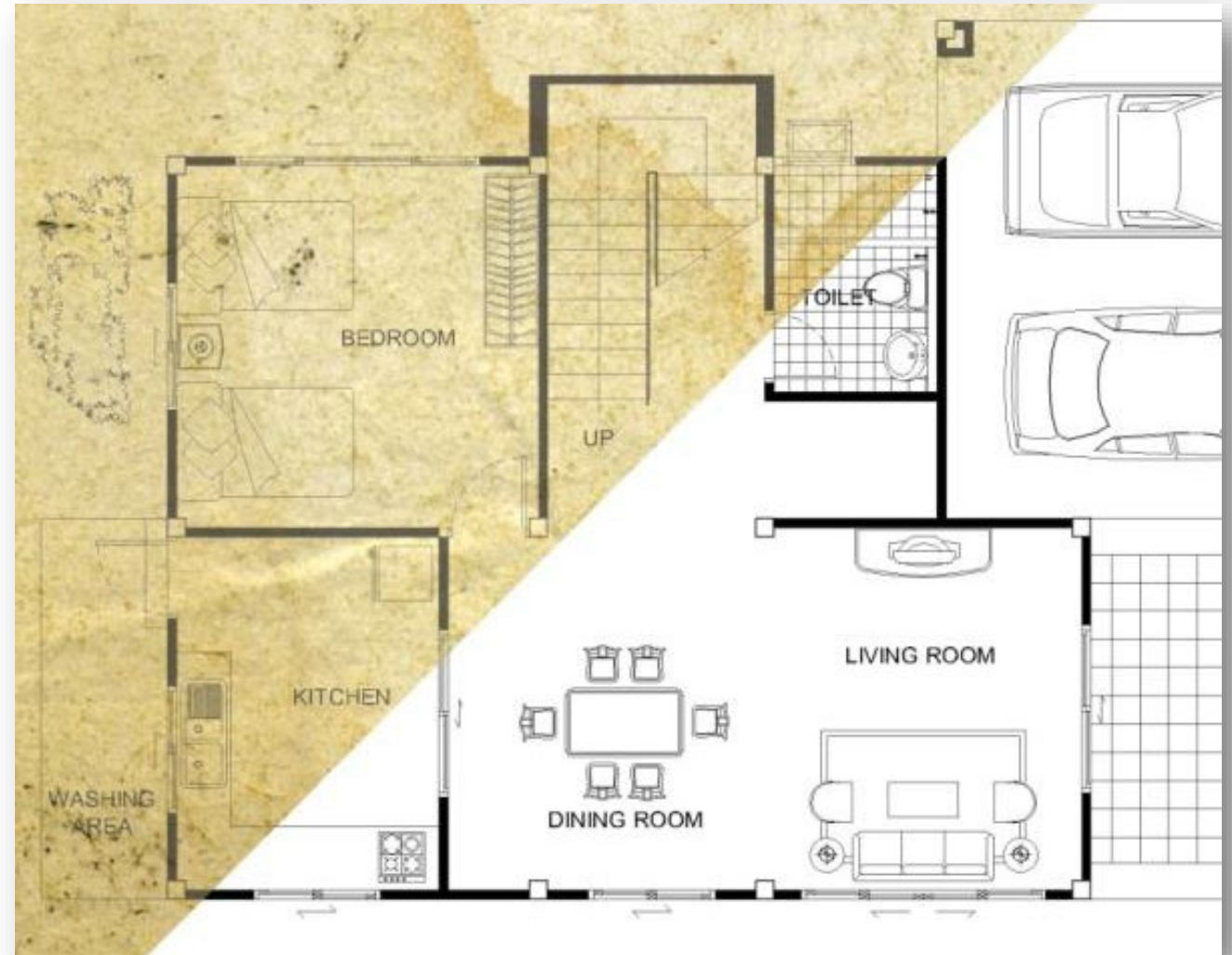


Fully featured scan product

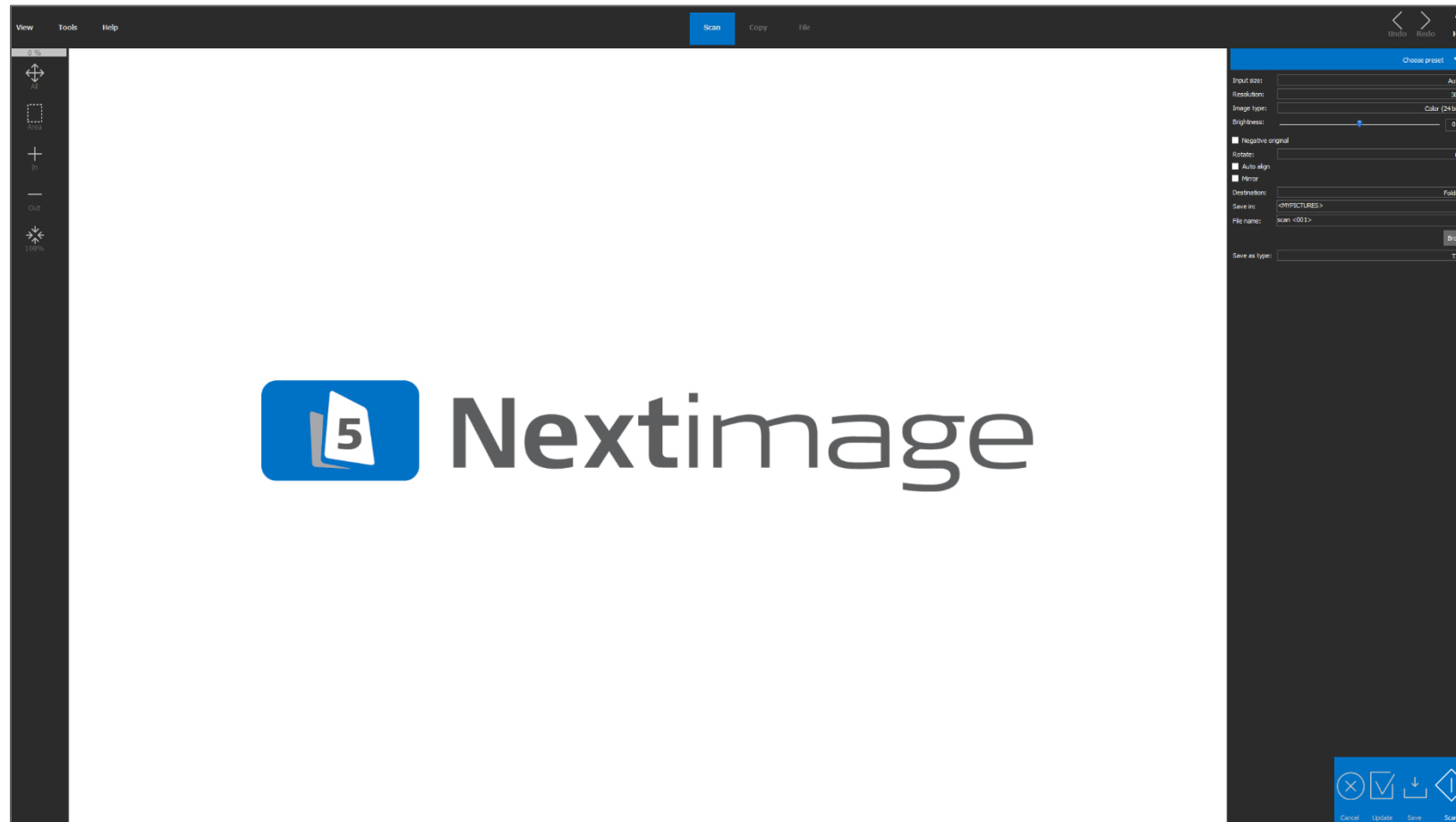
- Will not be available as an MFP on a high stand.
- Better than the SD 3600.
- Only **fully** featured compact scanner in the market.

Nextimage FREE included

- Scan to JPG, TIF, PDF and PDF/A
- Automatic Image Quality for cleanup and Alignment.
- Integrated Image Viewer
- Automatic file naming
- TWAIN driver included
- Available in Chinese, Dutch, English, French, German, Italian, Japanese, Korean, Spanish, Russian, Polish



Nextimage FREE included



Solutions

- SD One+ 24
- SD One+ 36
- Including Nextimage FREE
- Including Nextimage TWAIN
- Optional stand
- Optional software
- License activated – license included with scanner



Drive all your printers



Key Specifications

	SD One+ 24	SD One+ 36
Maximum Scan Width	24 inch (610 mm)	36 inch (914 mm)
Maximum Media Width	26.6 inch (676 mm)	38 inch (965 mm)
Weight	18.7 lbs. (8.5 kg)	24.9 lbs. (11.3 kg)
Dimensions	32.2x9.1x4.9 inch (819x230x124 mm)	45.6x9.1x4.9 inch (1158x230x124 mm)
Scan speed (inch/sec) 24" document Color and Monochrome	150 dpi: 3.8 ips 300 dpi: 1.9 ips 600 dpi: 1.0 ips	
Optical Resolution	600 dpi	
Maximum Resolution	9600 dpi	
Maximum Media Thickness	0.03 inch / 0.75mm	
Accuracy	0.1% +/- 1 pixel	

Software options

	Nextimage Free	Nextimage Scan + Archive	Nextimage Repro
File formats	JPG, PDF and TIF	Multipage PDF & TIF, JPG, PDF, DWF, CALS, BMP, JPEG-2000(JP2), JPEG2000 Extended(JPX), TIF-G3, TIF-G4, others	Multipage PDF & TIF, JPG, PDF, DWF, CALS, BMP, JPEG-2000(JP2), JPEG2000 Extended(JPX), TIF-G3, TIF-G4, others
File format controls	None	Full	Full
Resolution	150, 300 and 600 dpi	150 to 600 in 1 dpi increments	150 to 600 in 1 dpi increments
Index color support	No	Yes	Yes
Rotation	90 degree increments	Full control including snap to ruler	Full control including snap to ruler
Resize	1:1	Yes – full control	Yes – full control
Post scan viewing	No	Yes	Yes
Copy functionality	No	No	Yes
Color control	No	No	Yes. ICC and CLC

It is great that...

as a distributor

- You have a new product with new unique features for a valuable segment.
- You can reach a new customer segment outside of traditional scanning and MFP.

as a customer

- You get a product designed to fit your desk and the way you work.
- You can buy a scanner without having to buy a printer.
- You get a professional, easy to use solution.

Feedback & Questions?